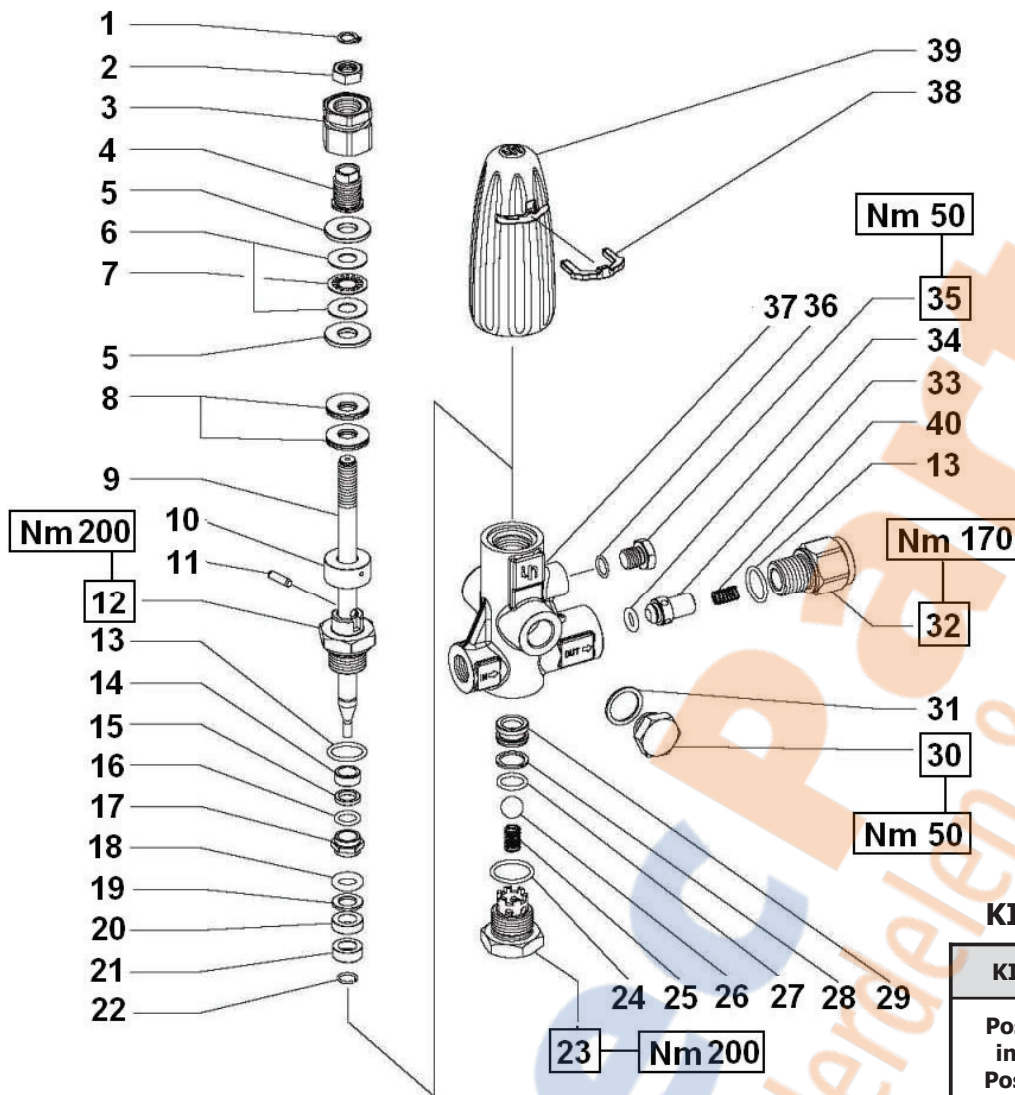


H560**KIT RICAMBI – SPARE KITS**

| KIT NR. | KIT 179 |
|---|---|
| Posizioni include Positions included | 8 – 13 – 15 – 16 18 – 19 – 22 – 24 25 – 26 – 27 – 28 29 – 34 – 36 – 40 |
| Nr. Pcs. | 1 |

| POS | COD. | DESCRIZIONE – DESCRIPTION KIT | NR |
|-----|------------|---------------------------------|--------|
| 1 | 90.0545.00 | Anello elastico Ø 10 UNI 7435 | 1 |
| 2 | 92.2400.00 | Dado M12x7x19 UNI 5589 | 1 |
| 3 | 36.3295.64 | Ghiera regolazione pressione | 1 |
| 4 | 36.3294.64 | Vite taratura pressione massima | 1 |
| 5 | 36.3284.66 | Piattello | 2 |
| 6 | 91.7911.00 | Ralla Ø 12x26x1 | 2 |
| 7 | 91.7910.00 | Gabbia a rullini Ø 12x26x2 | 1 |
| 8 | 94.8530.00 | Molla a tazza Ø 28x12.2x1.5 | 179 30 |
| 9 | 36.3279.66 | Asta valvola | 1 |
| 10 | 36.3285.66 | Boccola appoggio molle | 1 |
| 11 | 97.6149.00 | Spina Ø 5x18 UNI 1707 | 1 |
| 12 | 36.3280.66 | Boccola guida asta | 1 |
| 13 | 90.3849.00 | OR Ø 20.63x2.62 (128) | 179 2 |
| 14 | 36.3290.70 | Bussola di guida Ø 16.5 | 1 |
| 15 | 90.5072.00 | Anello antiest. Ø 12x16.5x3 | 179 1 |
| 16 | 90.3827.00 | OR Ø 11.91x2.62 (115) | 179 1 |
| 17 | 36.3292.70 | Distanziale | 179 1 |
| 18 | 90.4200.00 | OR Ø 12x4.5 | 179 1 |
| 19 | 90.5074.00 | Anello antiest. Ø 12x20x2 | 179 1 |
| 20 | 36.3291.70 | Boccola di guida Ø 20 | 11 |

| POS | COD. | DESCRIZIONE – DESCRIPTION KIT | NR |
|-----|------------|-------------------------------|-------|
| 21 | 36.3286.66 | Bussola di bloccaggio | 1 |
| 22 | 90.0068.00 | Anello di arresto Ø 12 | 179 1 |
| 23 | 36.3283.66 | Tappo M27x1.5 | 1 |
| 24 | 90.3855.00 | OR Ø 23.47x2.62 (3093) | 179 1 |
| 25 | 94.7374.00 | Molla Ø 9.3x15.5 | 179 1 |
| 26 | 97.4876.00 | Sfera 9/16" | 179 1 |
| 27 | 90.3835.00 | OR Ø 15.08x2.62 (119) | 179 1 |
| 28 | 90.5094.00 | Anello antiest. Ø 16.7x21x1.5 | 179 1 |
| 29 | 36.3285.66 | Sede valvola | 179 1 |
| 30 | 98.2180.00 | Tappo G 1/2"x10 | 1 |
| 31 | 96.7514.00 | Rosetta Ø 21.5x27x1.5 | 1 |
| 32 | 36.3287.66 | Nipplo G 1/2"F | 1 |
| 33 | 36.3288.70 | Otturatore | 1 |
| 34 | 90.4028.00 | OR Ø 9.12x3.53 (4036) | 179 1 |
| 35 | 98.2044.00 | Tappo G 1/4"x13 | 1 |
| 36 | 90.3585.00 | OR Ø 10.82x1.78 (2043) | 179 1 |
| 37 | 36.3278.36 | Corpo valvola | 1 |
| 38 | 36.3296.51 | Forcella | 1 |
| 39 | 36.3293.51 | Pomolo | 1 |
| 40 | 94.7409.00 | Molla Ø 12.7x15 | 179 1 |